



FOR SALE

Valley Luxury Townhouses (Five-Plex)



12402 E. Broadway Ave Spokane Valley, WA 99216



GENE ARGER, BROKER | G. ARGER CO. REAL ESTATE INC

(509) 926-5311 office | (509) 844-8814 cell | ggarger@argerco.com | www.argerco.com



Property Overview

- Sales Price \$2,150,000.00
- Parcel # 45153.0418
- Year Built 2020
- Well Maintained Luxury Large Townhouses (5 Plex)
- Lot Size 24,174+/- Square Feet (0.56)
- Total Building Size 10,250+/- Square Feet
- Each Townhouse Unit is 1,871 +/- Square Feet
- All Floor Plans consist of Three (3) Bedrooms and Three (3) Full Bathrooms
- One Attached Car Garage per Townhouse

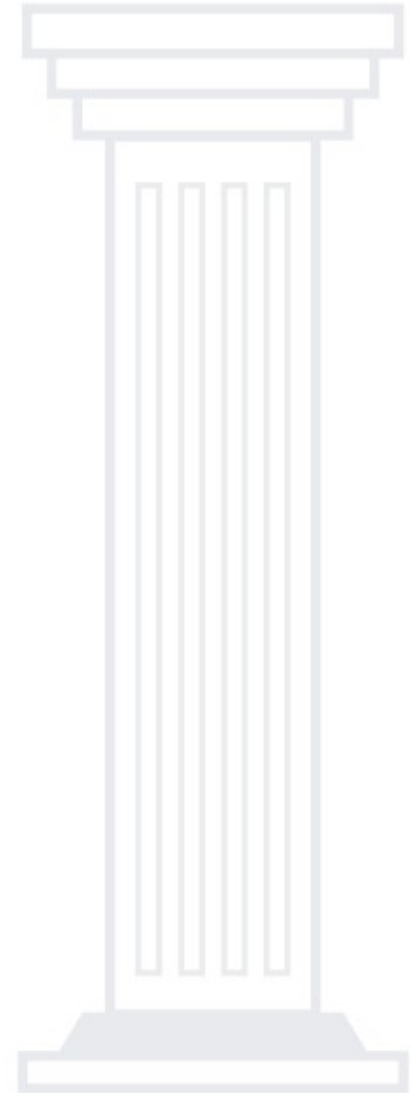
- Open Floor Plan Living Room Concept with 9' Ceilings
- Plumed Kitchen Island with Informal Dining
- Includes appliances: D/W, Refrigerator, Disposal, Microwave
- Gas Forced Air (High Efficiency Furnaces)
- Air Conditioning
- Oversized Master Bedrooms and Larger Master Closets
- Granite Counters, Soft Close Cabinets, Pantry
- Upstairs Laundry Rooms in each Unit
- Concrete Entrance and Driveway
- 200 AMP
- Trex Deck's

12402 E. Broadway Ave Spokane Valley, WA 99216



Basic
Financial Overview

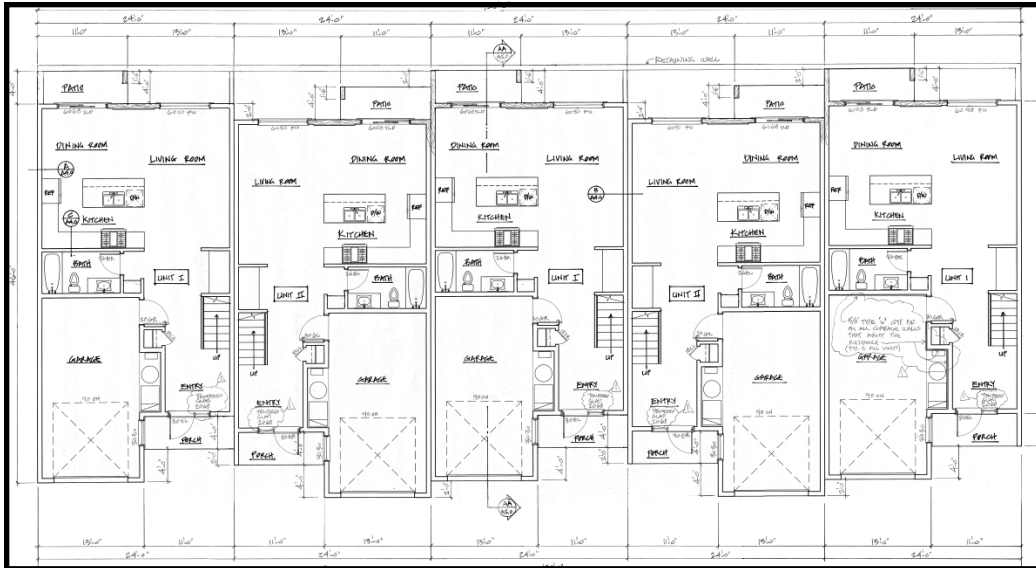
- Sales Price: \$2,15,000.00.
- \$210.00 per Square Foot, 10,250 Square Foot Total Structure per Spokane County Assessor
- \$460,000.00 per Townhouse Unit
- 2023 Total Property Taxes: \$12,481.01
- Landlord Owner responsible for taxes, sewer, water, trash, landscaping maintenance and snow removal
- Tenants responsible for gas, communications and electrical utilities
- Great Potential AIRBNB
- Do not disturb tenants
- For current Financial information please contact Listing Broker



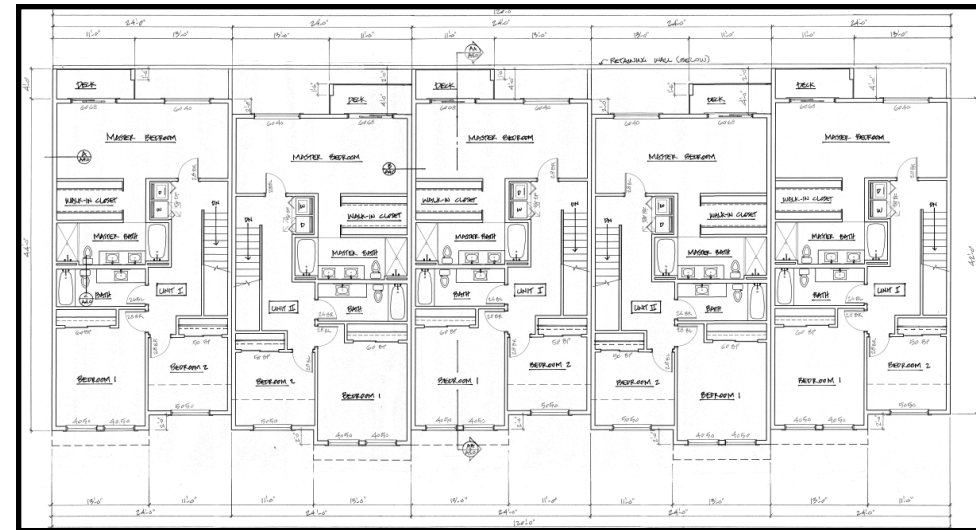
12402 E. Broadway Ave Spokane Valley, WA 99216

Floor Plans

First Floor



Second Floor



ARGER[®]

Real Estate, Inc.

Pictures



12402 E. Broadway Ave Spokane Valley, WA 99216



Area Location Map

Location:

Valley Broadway Townhouses are located in the heart of the Spokane Valley off the Pines Road Corridor.

Subject location has easy access to I-90 Freeway. Proceed

South from the freeway and take a left on Broadway Ave.

Near a variety of Amenities Including: Schools, Medical, Food Services, Shopping and Employment.



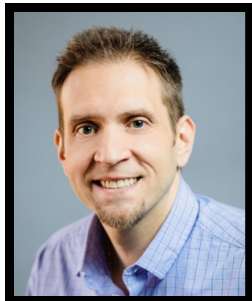
12402 E. Broadway Ave Spokane Valley, WA 99216



We are ***G. Arger Co. Real Estate, Inc.*** For over 40 years we have been meeting the real estate needs of hundreds of companies across the Pacific Northwest.

We offer services in commercial property sales, residential property sales, management, leasing, and landlord/tenant representation.

We are a full-service company that can handle all of your commercial real estate buying, selling, leasing and development needs.



Gene Arger, Broker
G. Arger Co. Real Estate Inc.

(509) 926-5311 office
(509) 844-8814 cell
300 N. Mullan Rd, Ste 204
Spokane Valley, WA 99206
ggarger@argerco.com
www.argerco.com

